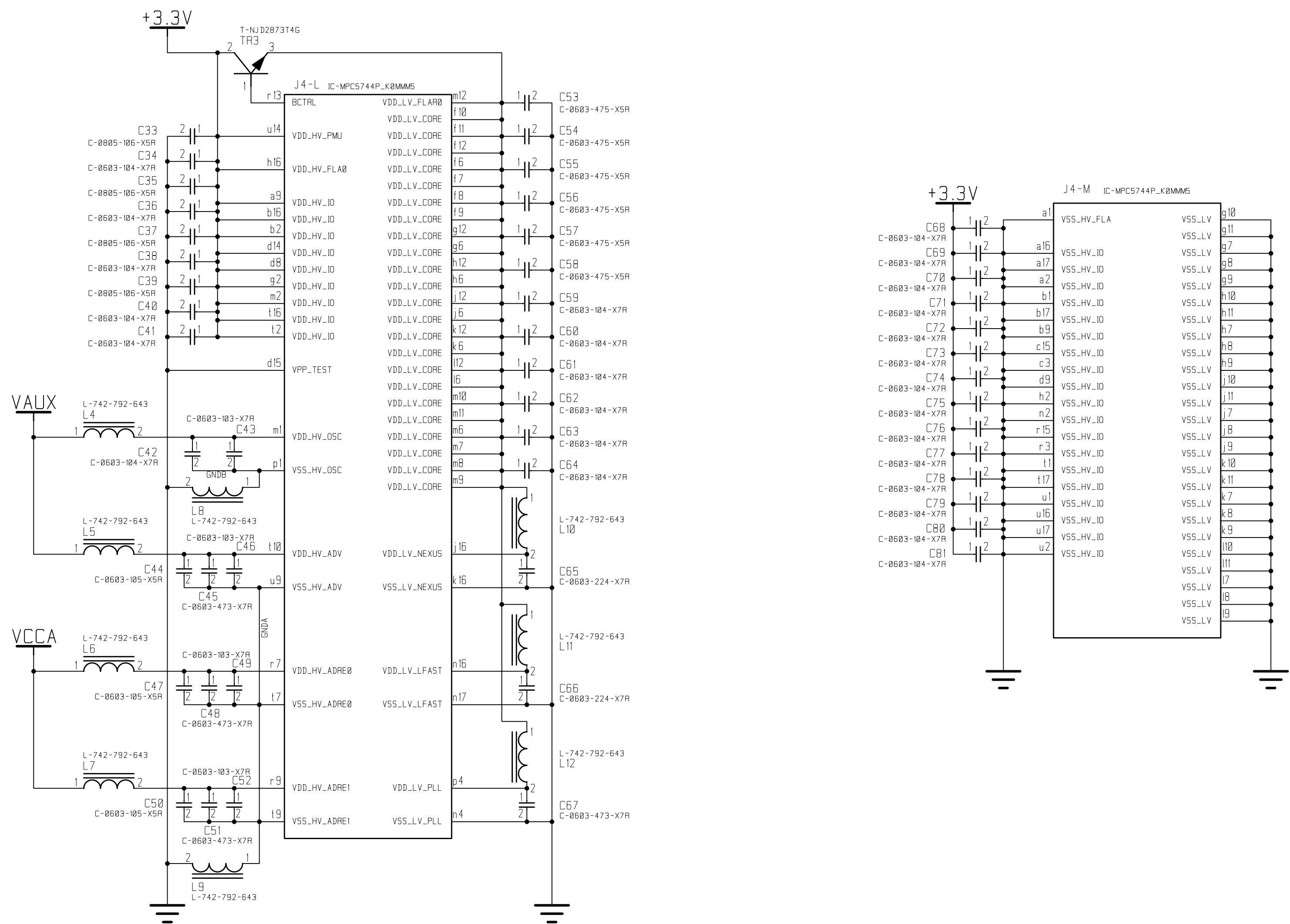




Power Supply			
	Date	Name	SBC5744 Rev. 2
designed	26.06.2015	Schubert	
checked			
modified			

MicroSys	EW509SL-02AA	Sheet 3 of 17
-----------------	--------------	------------------

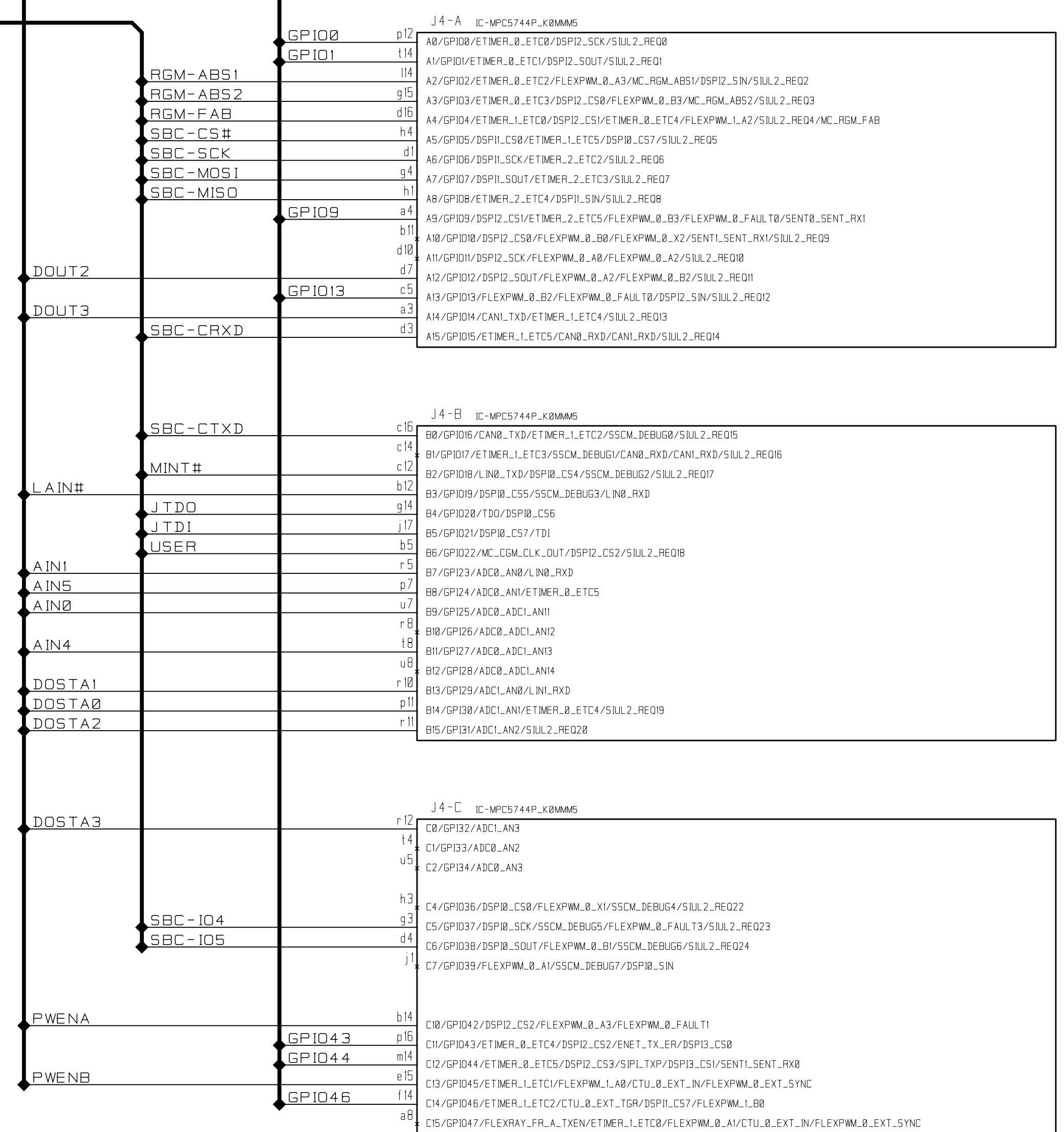
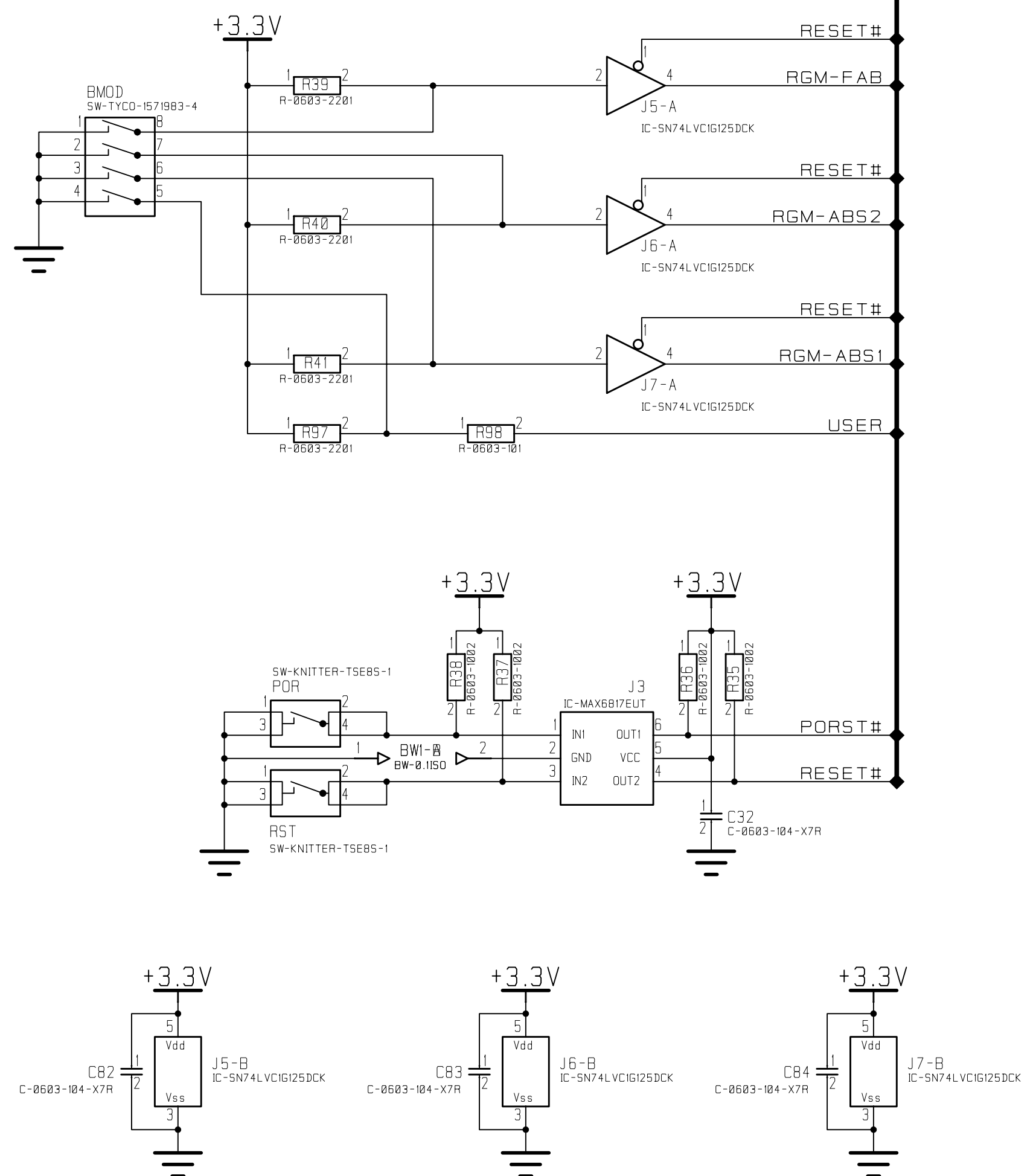


CPU Power				
	Date	Name	SBC5744 Rev. 2	
designed	26.06.2015	Schuber t		
checked				
modified				
MicroSys			EW509SL-02AA	Sheet 4 of 17

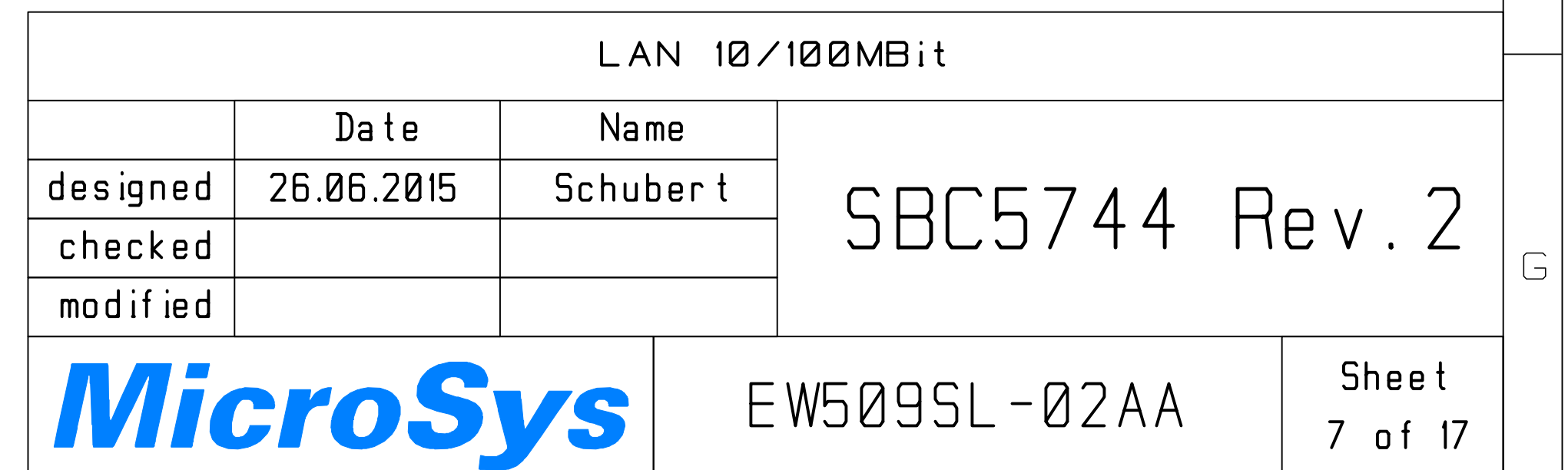
Extention

Internal-I/O

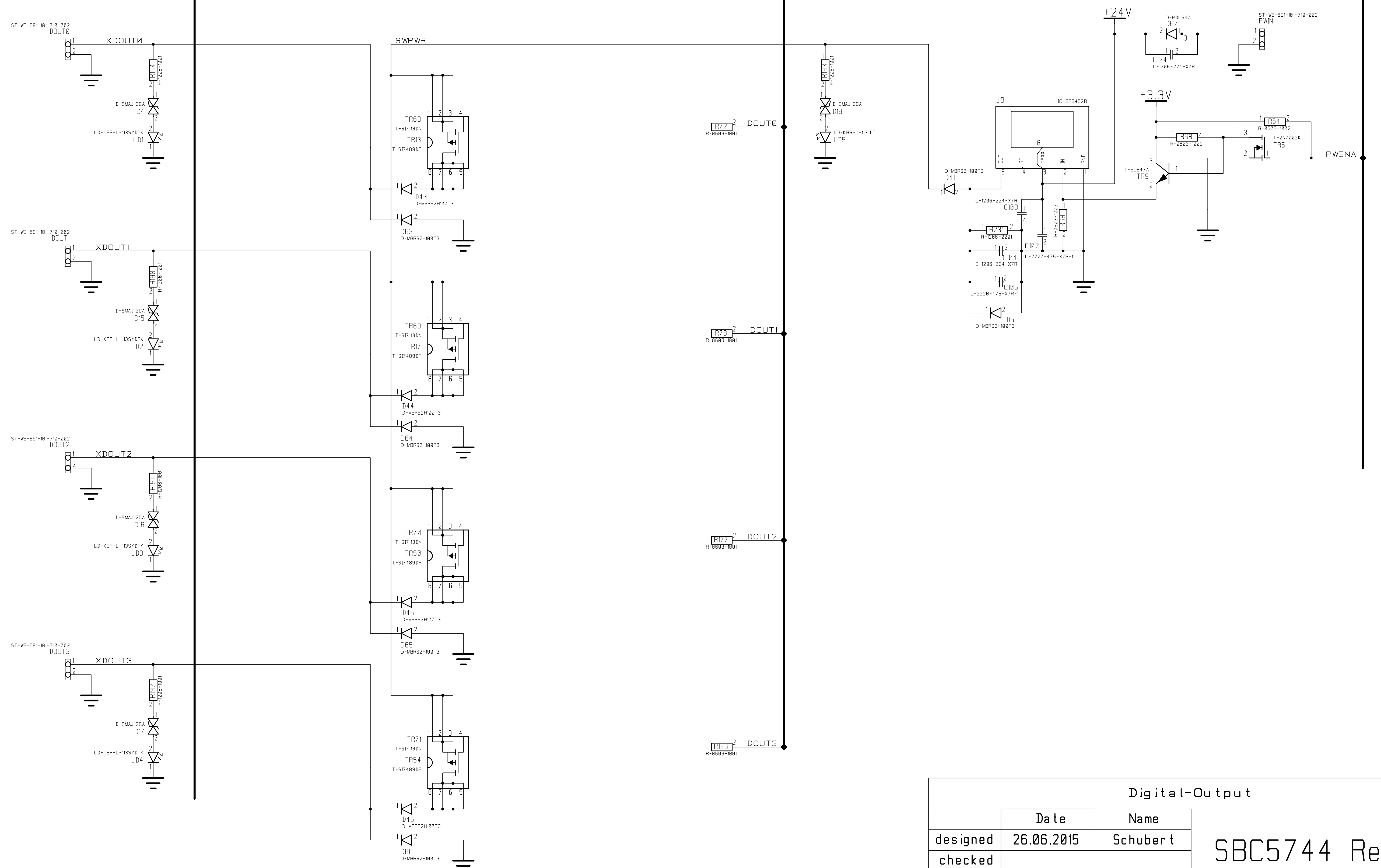
Control



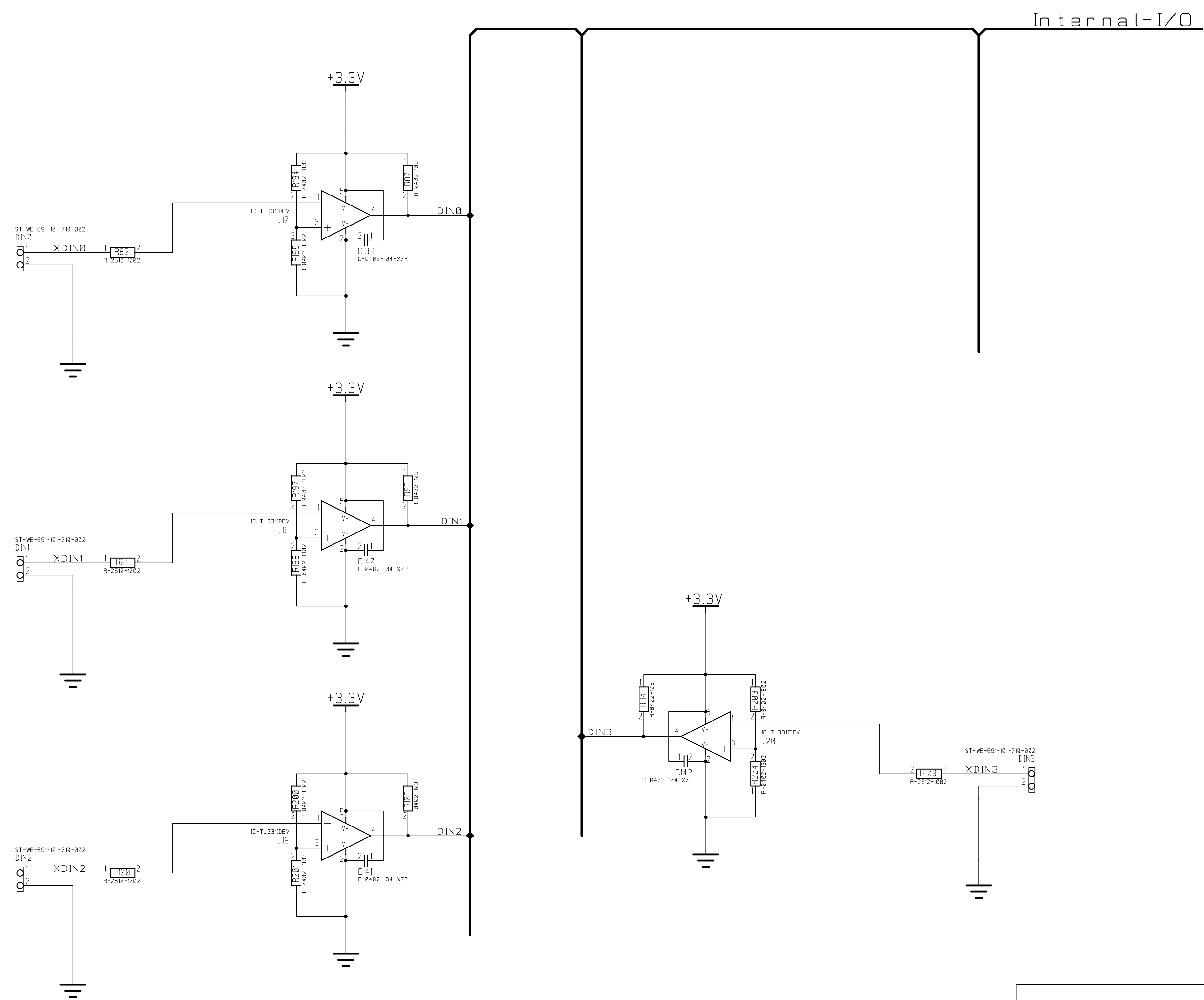
CPU Port A-C				
	Date	Name	SBC5744 Rev. 2	
designed	26.06.2015	Schubert		
checked				
modified				
MicroSys			EW509SL-02AA	Sheet 5 of 17

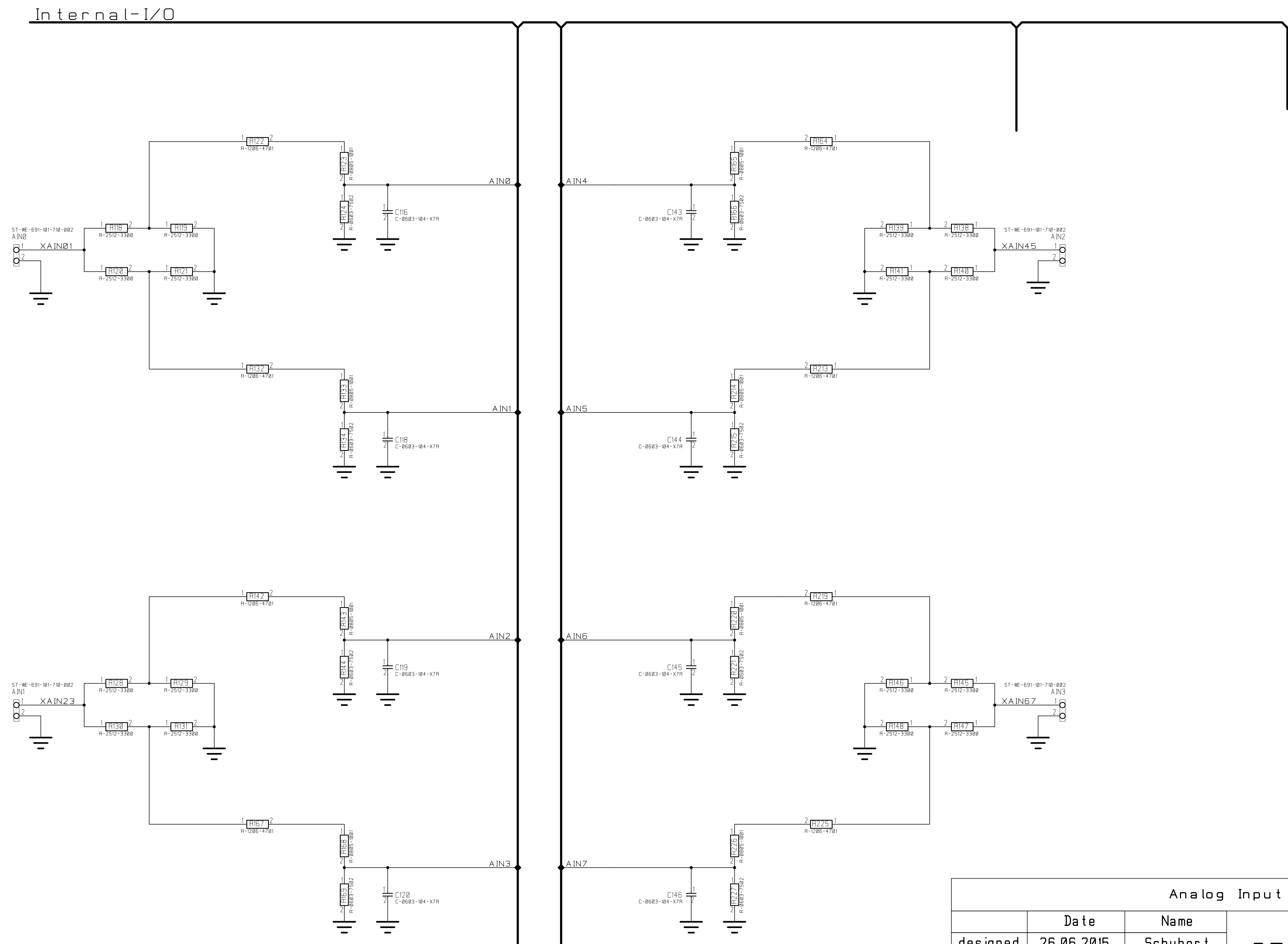


Internal-I/O

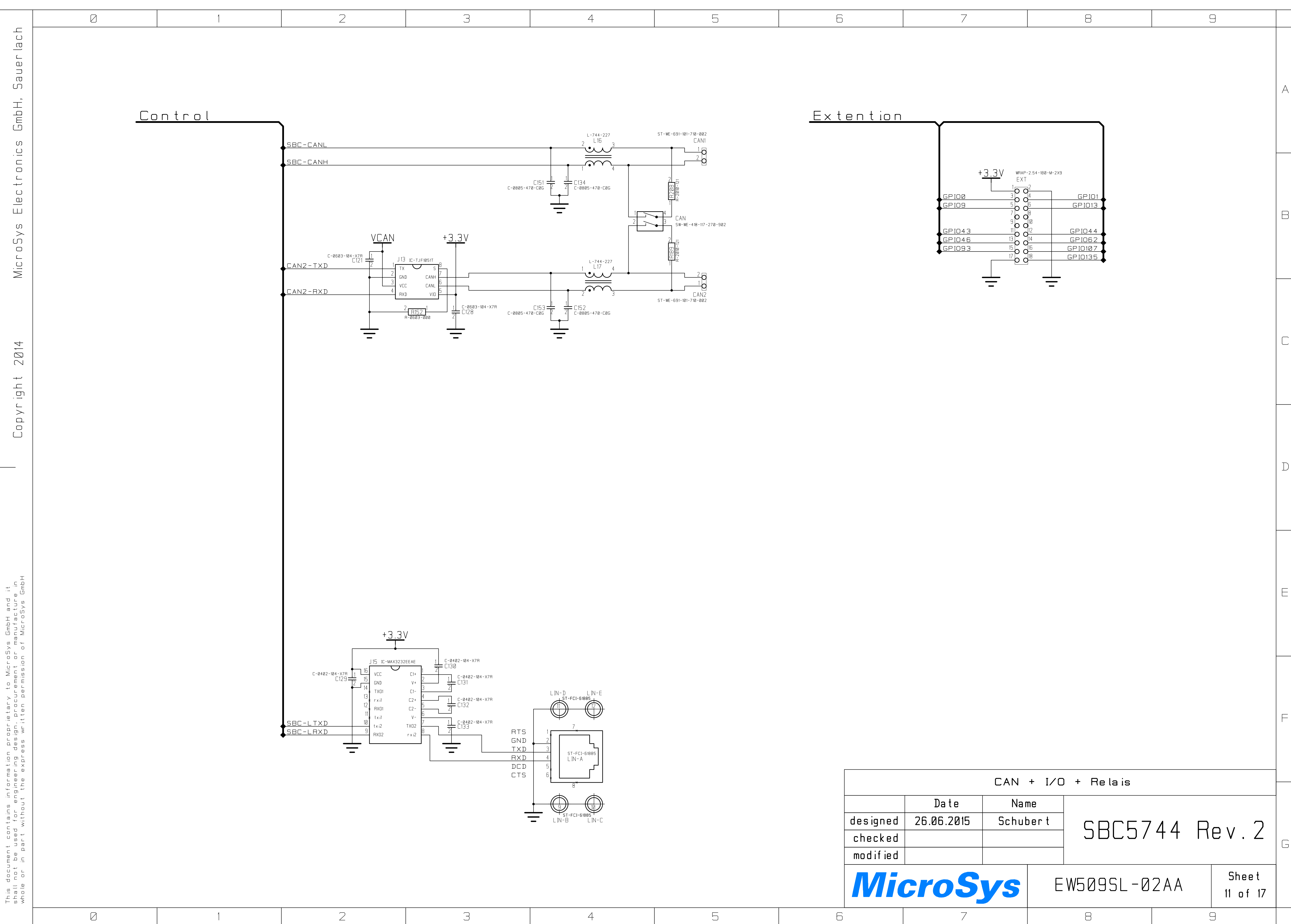


Digital-Output				
	Date	Name	SBC5744 Rev. 2	
designed	26.06.2015	Schubert		
checked				
modified				
MicroSys		EW509SL-02AA		Sheet 8 of 17





Analog Input			
	Date	Name	SBC5744 Rev. 2
designed	26.06.2015	Schubert	
checked			
modified			
MicroSys		EW509SL-02AA	Sheet 10 of 17



CAN + I/O + Relais				
	Date	Name	SBC5744 Rev. 2	
designed	26.06.2015	Schuber t		
checked				
modified				
MicroSys		EW509SL-02AA		Sheet 11 of 17